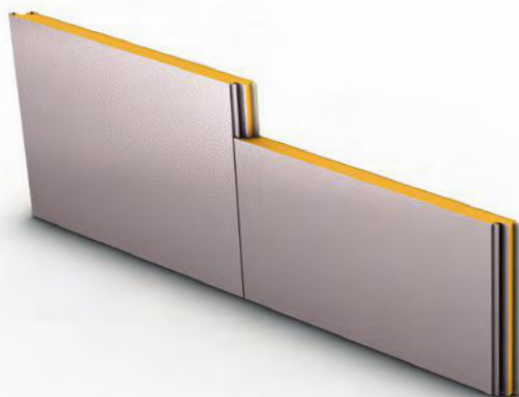


WALL PANELS

ISOLEREN™ IM

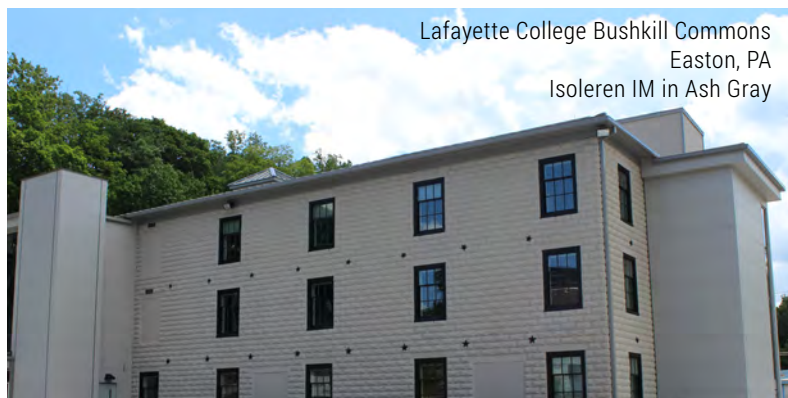
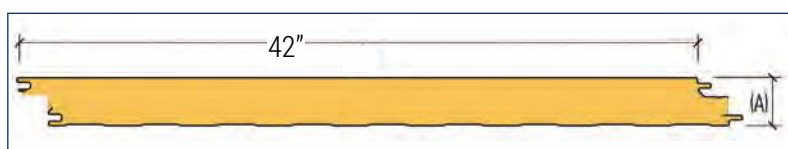


SKU:
IIM

Thickness (A):
2", 2 1/2", 3", and 4"

Exterior Texture:
Troweled Embossed

Standard Lengths:
8'-0" to 40'-0"



Lafayette College Bushkill Commons
Easton, PA
Isoleren IM in Ash Gray

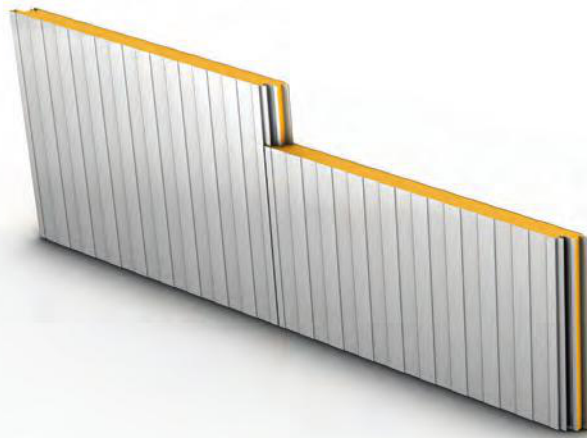


Self Storage
Brooklyn, NY
Isoleren IM in Regal Blue

AAC

WALL PANELS

ISOLEREN™ ML

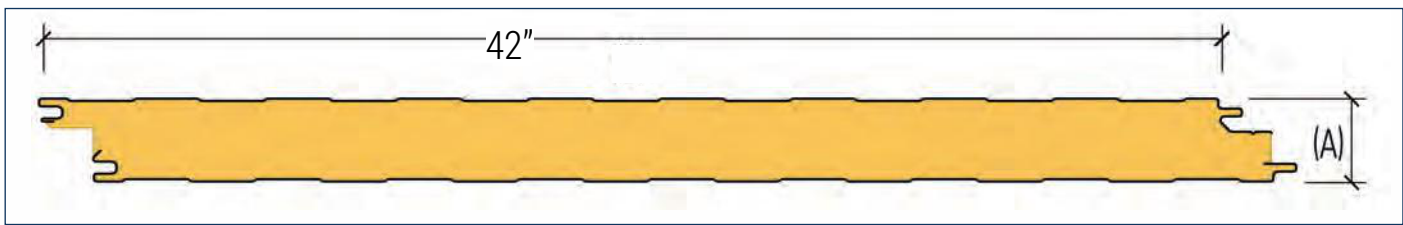


SKU:
IML

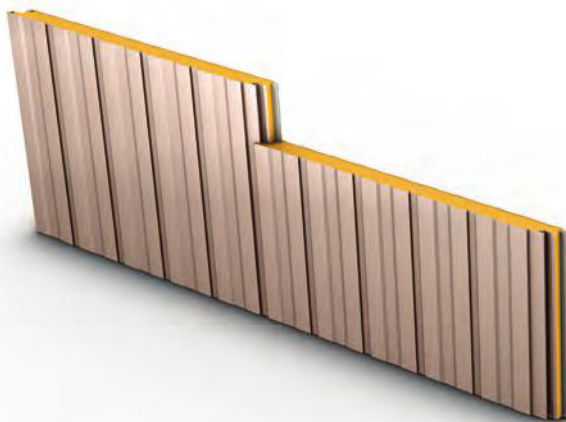
Thickness (A):
2", 2 1/2", 3", 4", 5",
and 6"

Exterior Texture:
Smooth or
Embossed

**Standard
Lengths:**
8'-0" to 53'-0"



ISOLEREN™ SL

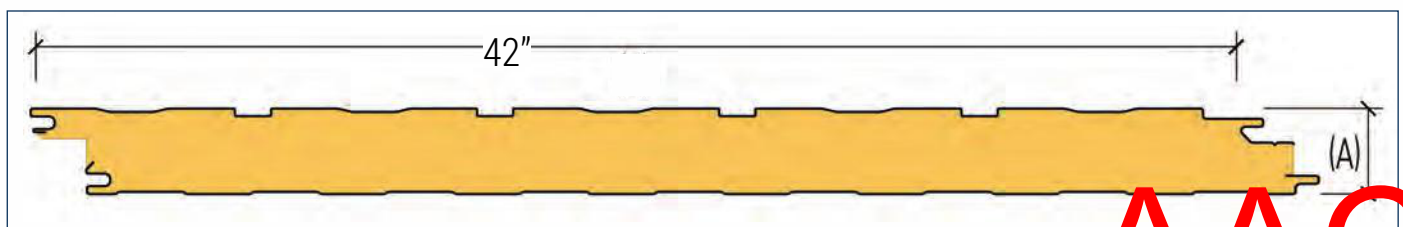


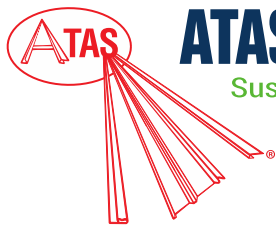
SKU:
ISL

Thickness (A):
2", 2 1/2", 3", 4",
5", and 6"

**Exterior
Texture:**
Smooth or
Embossed

**Standard
Lengths:**
8'-0" to 53'-0"





1. PRODUCT NAME

Isoleren® IM Insulated Metal Wall Panel
IIM422, IIM421, IIM423, IIM424

2. MANUFACTURER

ATAS INTERNATIONAL, INC.
Website: www.atas.com
Email: info@atas.com
Corporate Headquarters:
Allentown, PA 18106
Phone: (800) 468-1441
Western Facility:
Mesa, AZ 85204
Phone: (480) 558-7210

3. PRODUCT DESCRIPTION

Basic Uses:

Isoleren IM panels are used for walls on both new and retrofit commercial, industrial and architectural construction applications. This is a structural panel that can be fastened directly to structural framing or solid substrates using "Z" girts or hat channels. Isoleren IM offers aesthetics and enhanced thermal performance in a single component wall assembly. Isoleren IM is an alternative to traditional multi component wall assemblies.

Composition and Materials:

Standard Offerings: Isoleren IM facer panels are roll formed from 26 and 24-gauge Metallic Coated Steel (Galvalume). Liner panels are available in 26, 24, and 22-gauge.

Special Offerings: G90 Galvanized and Stainless Steel. Subject to minimum quantities and lead time.

Sizes and Profiles:

Isoleren IM panels are available in 2", 2.5", 3" and 4" thickness and 42" width modules. Isoleren IM is also available in a 1 1/4" reveal at the panel interlock. Panel lengths are cut to customer specifications, with a minimum of 8'0" and maximum of 40'0" and/or project design considerations. The Isoleren ML profile is standard on all liner panels.

Color and Finish:

A choice of seven stock colors are available in the 70% PVDF finish in low gloss (request color chart or chips). Also available in Siliconized Polyester and Polyester finish in standard gloss. Liner finish is available as Polyester or Siliconized Polyester, 70% PVDF, Standard Gloss (USDA white). Facer texture is troweled embossed. Liner texture may be smooth or embossed.

4. TECHNICAL DATA

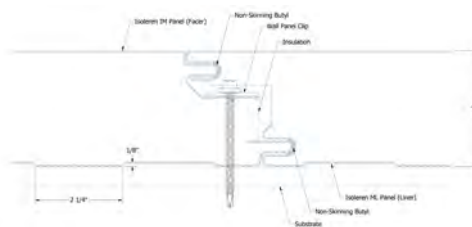
70% PVDF based finishes tested by paint supplier for:

- Dry Film Thickness: ASTM D 1005, ASTM D 1400, ASTM D 4138 or ASTM D 5796

- Specular Gloss: ASTM D 523
- Pencil Hardness: ASTM D 3363
- T-Bend Flexibility: ASTM D 4145
- Mandrel Bend Flexibility: ASTM D 522
- Impact Resistance: ASTM D 2794
- Adhesion: ASTM D 3359
- Water Immersion Resistance: ASTM D 870
- Abrasion Resistance: ASTM D 968
- Acid Resistance: ASTM D 1308
- Acid Rain Resistance (Kesternich): ASTM G 87 or DIN 50018
- Salt Spray: ASTM B 117
- Cyclic Salt Spray: ASTM D 5894
- Humidity Resistance: ASTM D 2247
- Accelerated Weathering: ASTM D 822 and ASTM G 155, ASTM G 151 or ASTM G 153
- Color Retention, Florida Exposure: ASTM D 2244
- Chalking Resistance – ASTM D 4214
- Cleveland Condensing Cabinet: ASTM D 4585
- Cure Test, MEK Resistance: ASTM D 5402
- Alkali Resistance, Sodium Hydroxide: ASTM D 1308, Procedure 7.2

Panel testing/ratings:

- Environmental Performance: ASTM C518, ASTM E283, ASTM E331
- Foam Core Characteristics: ASTM C723, ASTM D1621, ASTM D1622, ASTM D1623, ASTM D6226
- Fire Resistance: ASTM E84, NFPA 285, FM 4880
- Impact Resistance: FM 4881
- Engineering Properties: ASTM E1592, ASTM E72, FM 4881
- Load tables available upon request
- Galvanized Steel: ASTM A 653
- 55% Al-Zn alloy coated Steel: ASTM A 792
- Coil Coating: ASTM A 755



Thickness (2, 2.5, 3, 4, 5 and 6-inch)



5. INSTALLATION

Isoleren IM is a structural wall panel that can be installed either vertically or horizontally. Installation guide is available through ATAS. Visit www.atas.com for more information.

6. AVAILABILITY AND COST

Availability:

Isoleren IM panels are readily available through ATAS product distributors. A complete line of related components and trim accessories is available to complete the wall system. Flat sheet and/or coil stock in matching color is available for fabrication of related accessories by the installing contractor. Factory formed options are also available.

Cost:

Contact ATAS product distributors for current pricing.

7. WARRANTY

Products coated with a fluoropolymer, 70% PVDF finish carry a limited warranty against chalking and fading.

8. MAINTENANCE

Isoleren IM panels require minimal maintenance. Surface residue is easily removed by conventional cleaning methods. For painted products, minor scratches should be touched up with matching paint, available from the manufacturer.

9. TECHNICAL SERVICES

Complete technical information and literature are available at www.atas.com. ATAS will assist with design ideas and shop drawings.

10. FILING SYSTEM

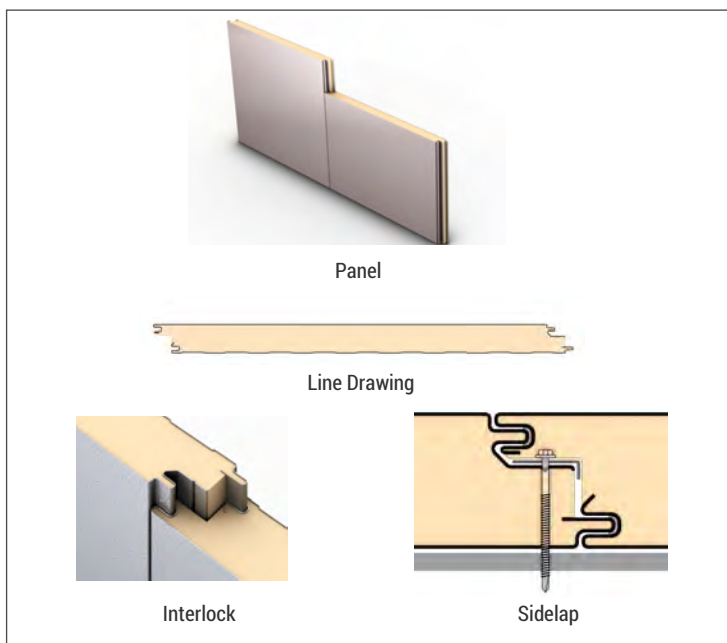
- www.atas.com
- Additional product information is available from the manufacturer upon request.



AAC



Exterior Profile:	Isoleren IM
Interior Profile:	Isoleren ML
Exterior Gauge:	26, 24
Exterior Texture:	Troweled Embossed
Exterior Finish:	70% PVDF, Low Gloss, Siliconized Polyester
Interior Gauge:	26, 24, 22
Interior Texture:	Smooth or Embossed
Interior Finish:	Polyester, Siliconized Polyester, 70% PVDF, Standard Gloss (USDA White)
Substrate:	Galvalume®, G90 Galvanized & Stainless Steel
Thickness (A):	2, 2½", 3", and 4"
Panel Coverage (B):	42"
Core:	Continuously poured-in-place, polyisocyanurate, insulating foam
R-Value:	R-8 per inch of thickness (nominal)
Reveal:	Also available in a 1¼" reveal at panel interlock
Standard Lengths:	8'-0" to 40'-0"
Note:	All information subject to change without notice. Please reference website for most current data.

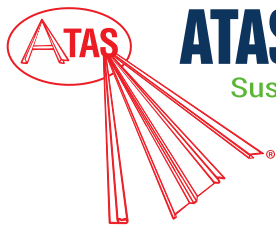


KEY ATTRIBUTES - THE ATAS DIFFERENCE

- Unsurpassed product quality
- Superior thermal performance
- Excellent spanning capabilities
- Concealed attachment
- One-piece, single component, with built in thermal breaks and vapor/air barriers

TESTING

TYPE	TEST PROTOCOL	DESCRIPTION	RESULTS
Environmental Performance	ASTM C518	Steady-State Thermal Transmission Properties by Means of the Heat Flow Meter Apparatus	K-Factor 0.139 BTU-in/hr-ft² · F° at 75° mean K-Factor 0.129 BTU-in/hr-ft² · F° at 35° mean
	ASTM E283	Rate of Air Leakage Through Exterior Windows, Curtain Walls and Doors Under Specified Pressure Difference Across the Specimen	0.0011 - cfm/sf at 20-psf
	ASTM E331	Water Penetration of Exterior Windows, Skylights, Doors, and Curtain Walls by Uniform Static Air Pressure Difference	Zero penetration at 20-psf
Foam Core Characteristics	ASTM C273	Shear Properties of Sandwich Core Metals	Shear Strength = 16psi
	ASTM D1621	Compressive Properties of Rigid Cellular Plastics	Compressive Strength = 18psi
	ASTM D1622	Apparent Density of Rigid Cellular Plastics	Apparent Density - 2.25pcf
	ASTM D1623	Tensile and Tensile Adhesion Properties of Rigid Cellular Plastics	Tensile Strength - 21psi
	ASTM D6226	Open Cell Content of Rigid Cellular Plastics	Open Cell Content > 90% closed cells
Fire Resistance	ASTM E84	Surface Burning Characteristics of Building Materials	Flame Spread < 25, Smoke Developed < 450
	NFPA 285	Standard Fire Test Method for Evaluation of Fire Propagation Characteristics of Exterior Non-Load-Bearing Wall Assemblies Containing Combustible Components	Passed
	FM 4880	Factory Mutual Approval Standard for Class 1 Fire Rating of Insulated Wall or Wall and Roof/Ceiling Panels, Interior Finish Materials or Coatings and Exterior Wall Systems	Class 1 Fire Rated
Impact Resistance	FM 4881	Factory Mutual Approval Standard for Class 1 Exterior Wall Systems	Class 1 Approved
Engineering Properties	ASTM E1592	Structural Performance of Sheet Metal Roof and Siding Systems by Uniform Static Air Pressure Difference	See Load Tables
	ASTM E72	Strength Tests of Panels for Building Construction	See Load Tables
	FM 4881	Factory Mutual Approval Standard for Class 1 Exterior Wall Systems	Class 1 Approved
Bond Strength	Fatigue Endurance	2,000,000 Alternating Cycles of L/180 Deflection	No evidence of facer or liner delamination, fracture of foam core or permanent set
	Freeze/Heat Cycle	Twenty-One (21) Eight-hour Temperature Cycles (-20° F to 180° F)	No evidence of delamination, blistering or permanent set
	Humidity Endurance	1,200 Hours of 93% Humidity at a Temperature of 158° F	No evidence of delamination, blistering or interface corrosion
	Autoclave	Exposure to 218° F and a pressure of 2-psig for 2½ hours	No evidence of facer or liner delamination



1. PRODUCT NAME

Isoleren® ML Insulated Metal Wall Panel
IML422, IML421, IML423, IML424,
IML425, IML426

2. MANUFACTURER

ATAS INTERNATIONAL, INC.
Website: www.atas.com
Email: info@atas.com
Corporate Headquarters:
Allentown, PA 18106
Phone: (800) 468-1441
Western Facility:
Mesa, AZ 85204
Phone: (480) 558-7210

3. PRODUCT DESCRIPTION

Basic Uses:

Isoleren ML panels are used for walls on both new and retrofit commercial, industrial and architectural construction applications. This is a structural panel that can be fastened directly to structural framing or solid substrates using "Z" girts or hat channels. Isoleren ML offers aesthetics and enhanced thermal performance in a single component wall assembly. Isoleren ML is an alternative to traditional multi component wall assemblies.

Composition and Materials:

Standard Offerings: Isoleren ML facer panels are roll formed from 26, 24, and 22-gauge Metallic Coated Steel (Galvalume). Liner panels are available in 26, 24, and 22-gauge.

Special Offerings: G90 Galvanized and Stainless Steel. Subject to minimum quantities and lead time.

Sizes and Profiles:

Isoleren ML panels are available in 2", 2.5", 3", 4", 5", and 6" thickness and 42" width modules. Panel lengths are cut to customer specifications, with a minimum of 8'0" and maximum of 53'0" and/or project design considerations. The Isoleren ML profile is standard on all liner panels.

Color and Finish:

A choice of seven stock colors are available in the 70% PVDF finish in low gloss (request color chart or chips). Also available, Polyester, Siliconized Polyester, Standard Gloss (USDA White), Plastisol, and Stainless. Liner finish is available as Polyester or Siliconized Polyester, 70% PVDF, Standard Gloss (USDA white), Plastisol, and Stainless. Facer texture is smooth or embossed. Liner texture may be smooth or embossed.

4. TECHNICAL DATA

70% PVDF based finishes tested by paint supplier for:

- Dry Film Thickness: ASTM D 1005, ASTM D 1400, ASTM D 4138 or ASTM D 5796

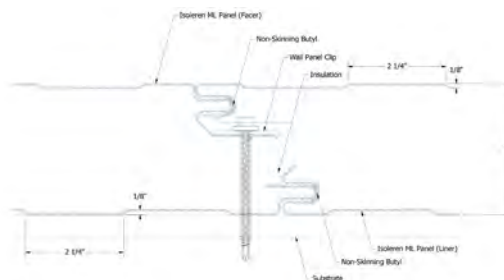
- Specular Gloss: ASTM D 523
- Pencil Hardness: ASTM D 3363
- T-Bend Flexibility: ASTM D 4145
- Mandrel Bend Flexibility: ASTM D 522
- Impact Resistance: ASTM D 2794
- Adhesion: ASTM D 3359
- Water Immersion Resistance: ASTM D 870
- Abrasion Resistance: ASTM D 968
- Acid Resistance: ASTM D 1308
- Acid Rain Resistance (Kesternich): ASTM G 87 or DIN 50018
- Salt Spray: ASTM B 117
- Cyclic Salt Spray: ASTM D 5894
- Humidity Resistance: ASTM D 2247
- Accelerated Weathering: ASTM D 822 and ASTM G 155, ASTM G 151 or ASTM G 153
- Color Retention, Florida Exposure: ASTM D 2244
- Chalking Resistance – ASTM D 4214
- Cleveland Condensing Cabinet: ASTM D 4585
- Cure Test, MEK Resistance: ASTM D 5402
- Alkali Resistance, Sodium Hydroxide: ASTM D 1308, Procedure 7.2

Panel testing/ratings:

- Environmental Performance: ASTM C518, ASTM E283, ASTM E331
- Foam Core Characteristics: ASTM C723, ASTM D1621, ASTM D1622, ASTM D1623, ASTM D6226
- Fire Resistance: ASTM E84, NFPA 285, FM 4880
- Impact Resistance: FM 4881
- Engineering Properties: ASTM E1592, ASTM E72, FM 4881
- Load tables available upon request
- Galvanized Steel: ASTM A 653
- 55% Al-Zn alloy coated Steel: ASTM A 792
- Coil Coating: ASTM A 755

5. INSTALLATION

Isoleren ML is a structural wall panel that can be installed either vertically or horizontally. Installation guide is available through ATAS. Visit www.atas.com for more information.



Thickness (2, 2.5, 3, 4, 5, and 6-inch)

6. AVAILABILITY AND COST

Availability:

Isoleren ML panels are readily available through ATAS product distributors. A complete line of related components and trim accessories is available to complete the wall system. Flat sheet and/or coil stock in matching color is available for fabrication of related accessories by the installing contractor. Factory formed options are also available.

Cost:

Contact ATAS product distributors for current pricing.

7. WARRANTY

Products coated with a fluoropolymer, Kynar 70% PVDF finish carry a limited warranty against chalking and fading.

8. MAINTENANCE

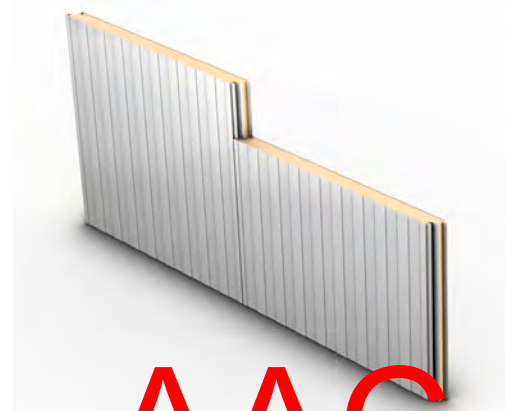
Isoleren ML panels require minimal maintenance. Surface residue is easily removed by conventional cleaning methods. For painted products, minor scratches should be touched up with matching paint, available from the manufacturer.

9. TECHNICAL SERVICES

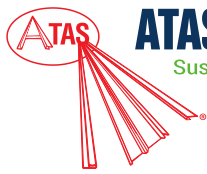
Complete technical information and literature are available at www.atas.com. ATAS will assist with design ideas and shop drawings.

10. FILING SYSTEM

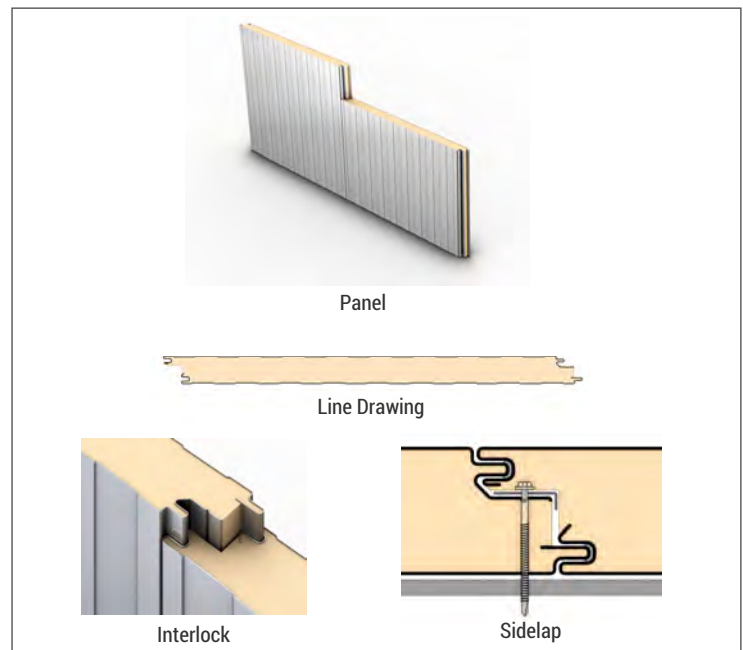
- www.atas.com
- Additional product information is available from the manufacturer upon request.



AAC



Exterior Profile:	Isoleren ML
Interior Profile:	Isoleren ML
Exterior Gauge:	26, 24, 22
Exterior Texture:	Smooth or Embossed
Exterior Finish:	Polyester, Siliconized Polyester, 70% PVDF, Standard Gloss (USDA White), Plastisol, Stainless
Interior Gauge:	26, 24, 22
Interior Texture:	Smooth or Embossed
Interior Finish:	Polyester, Siliconized Polyester, 70% PVDF, Standard Gloss (USDA White), Plastisol, Stainless
Substrate:	Galvalume®, G90 Galvanized & Stainless Steel
Thickness (A):	2, 2½", 3", 4", 5", and 6"
Panel Coverage (B):	42"
Core:	Continuously poured-in-place, Polyisocyanurate, Insulating foam
R-Value	R-8 per inch of thickness (nominal)
Standard Lengths:	8'-0" to 53'-0"
Note:	All information subject to change without notice. Please reference website for most current data.

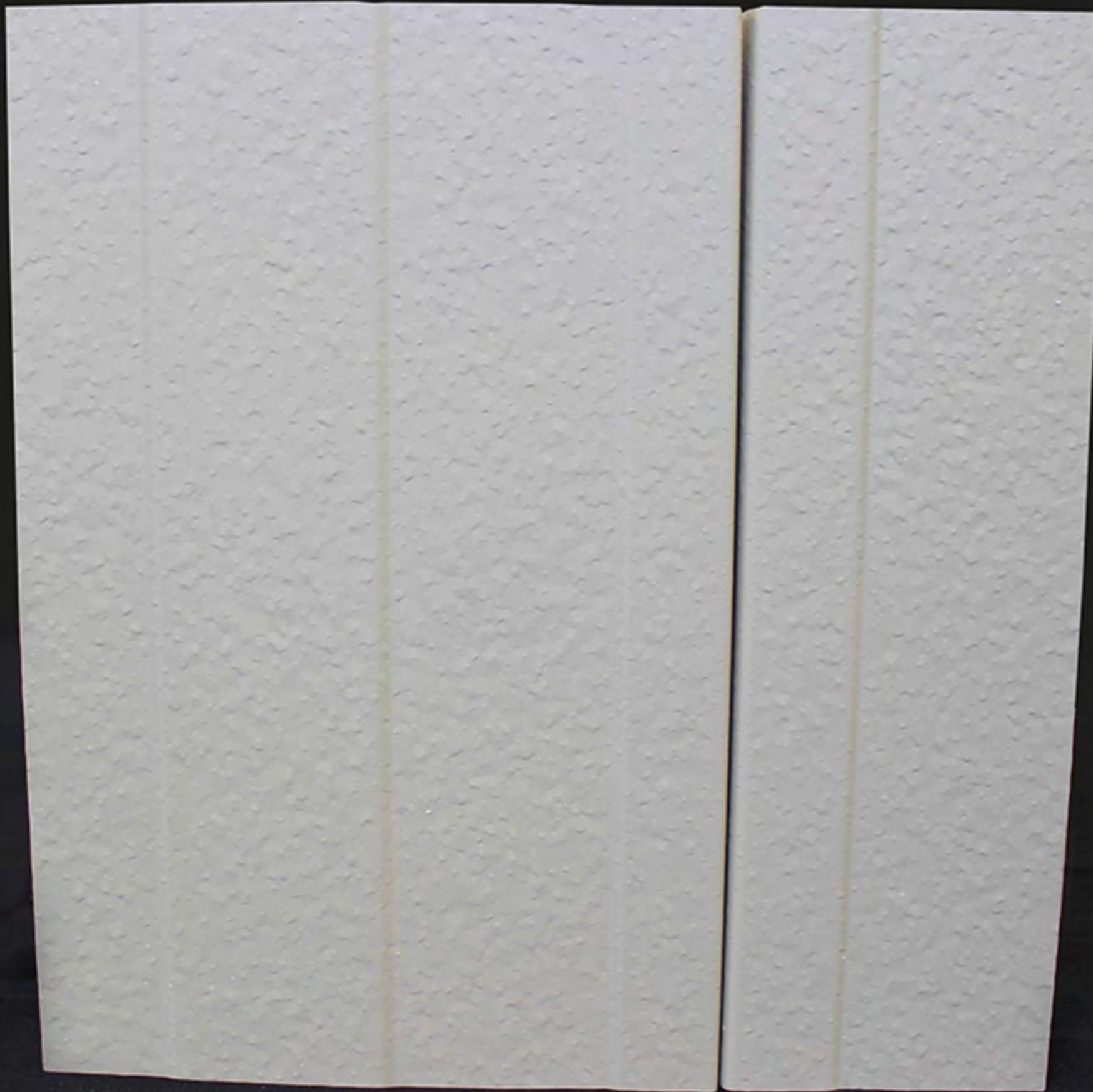


KEY ATTRIBUTES - THE ATAS DIFFERENCE

- Unsurpassed product quality
- Superior thermal performance
- Excellent spanning capabilities
- Concealed attachment
- One-piece, single component, with built in thermal breaks and vapor/air barriers

TESTING

TYPE	TEST PROTOCOL	DESCRIPTION	RESULTS
Environmental Performance	ASTM C518	Steady-State Thermal Transmission Properties by Means of the Heat Flow Meter Apparatus	K-Factor 0.139 BTU-in/hr-ft²·F° at 75° mean K-Factor 0.129 BTU-in/hr-ft²·F° at 35° mean
	ASTM E283	Rate of Air Leakage Through Exterior Windows, Curtain Walls and Doors Under Specified Pressure Difference Across the Specimen	0.0011 - cfm/sf at 20-psf
	ASTM E331	Water Penetration of Exterior Windows, Skylights, Doors, and Curtain Walls by Uniform Static Air Pressure Difference	Zero penetration at 20-psf
Foam Core Characteristics	ASTM C273	Shear Properties of Sandwich Core Metals	Shear Strength = 16psi
	ASTM D1621	Compressive Properties of Rigid Cellular Plastics	Compressive Strength = 18psi
	ASTM D1622	Apparent Density of Rigid Cellular Plastics	Apparent Density - 2.25pcf
	ASTM D1623	Tensile and Tensile Adhesion Properties of Rigid Cellular Plastics	Tensile Strength - 21psi
	ASTM D6226	Open Cell Content of Rigid Cellular Plastics	Open Cell Content > 90% closed cells
Fire Resistance	ASTM E84	Surface Burning Characteristics of Building Materials	Flame Spread < 25, Smoke Developed < 450
	NFPA 285	Standard Fire Test Method for Evaluation of Fire Propagation Characteristics of Exterior Non-Load-Bearing Wall Assemblies Containing Combustible Components	Passed
	FM 4880	Factory Mutual Approval Standard for Class 1 Fire Rating of Insulated Wall or Wall and Roof/Ceiling Panels, Interior Finish Materials or Coatings and Exterior Wall Systems	Class 1 Fire Rated
Impact Resistance	FM 4881	Factory Mutual Approval Standard for Class 1 Exterior Wall Systems	Class 1 Approved
Engineering Properties	ASTM E1592	Structural Performance of Sheet Metal Roof and Siding Systems by Uniform Static Air Pressure Difference	See Load Tables
	ASTM E72	Strength Tests of Panels for Building Construction	See Load Tables
	FM 4881	Factory Mutual Approval Standard for Class 1 Exterior Wall Systems	Class 1 Approved
Bond Strength	Fatigue Endurance	2,000,000 Alternating Cycles of L/180 Deflection	No evidence of facer or liner delamination, fracture of foam core or permanent set
	Freeze/Heat Cycle	Twenty-One (21) Eight-hour Temperature Cycles (-20°F to 180°F)	No evidence of delamination, blistering or permanent set
	Humidity Endurance	1,200 Hours of 93% Humidity at a Temperature of 158° F	No evidence of delamination, blistering or interface corrosion
	Autoclave	Exposure to 218° F and a pressure of 2-psig for 2½ hours	No evidence of facer or liner delamination



Panel Sample | Isoleren ML
Troweled Embossed: Surrey Beige

AAC

PZ21-12000027
10/6/2021

